

# Wild Meat Enforcement and Governance

May 23, 2023

Francis Tarla  
Lude Kinzonzi  
Ben Evans



**USAID**  
FROM THE AMERICAN PEOPLE



# DO NOW

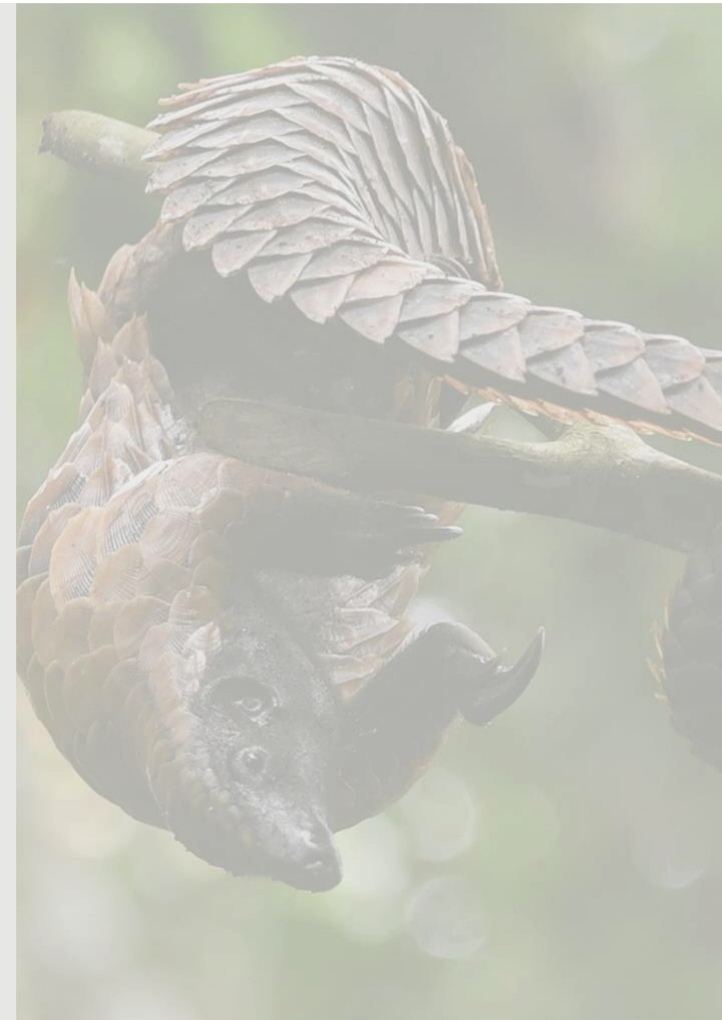
**While others are logging in, please answer in the chat:**

In what country do you work? Name at least one protected species in the bushmeat trade in this country.



# Agenda

8:00-8:15	Introduction: How effective are regulations at reducing illegal and unsustainable sale of wildlife?
8:15-8:40	Panel Discussion
8:40-8:55	Q&A Discussion
8:55-9:00	Wrap Up





01

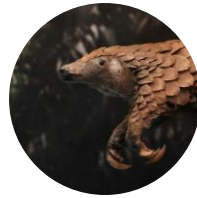


# Learning Series

Purpose and objectives of this learning exchange

# Wild Meat Learning Series

Join us for the Wild Meat Learning  
Series from April through July 2023



Kickoff to the Wild Meat Learning Exchange  
Date: 19 April 2023  
Time: 0800-0900 EDT / 1300-1400 WAT



Wild Meat Enforcement and Governance  
Date: 23 May 2023  
Time: 0800-0900 EDT / 1300-1400  
WAT



Sustainable Wildlife Management Project  
Date: 21 June 2023  
Time: 0800-0900 EDT / 1300-1400  
WAT

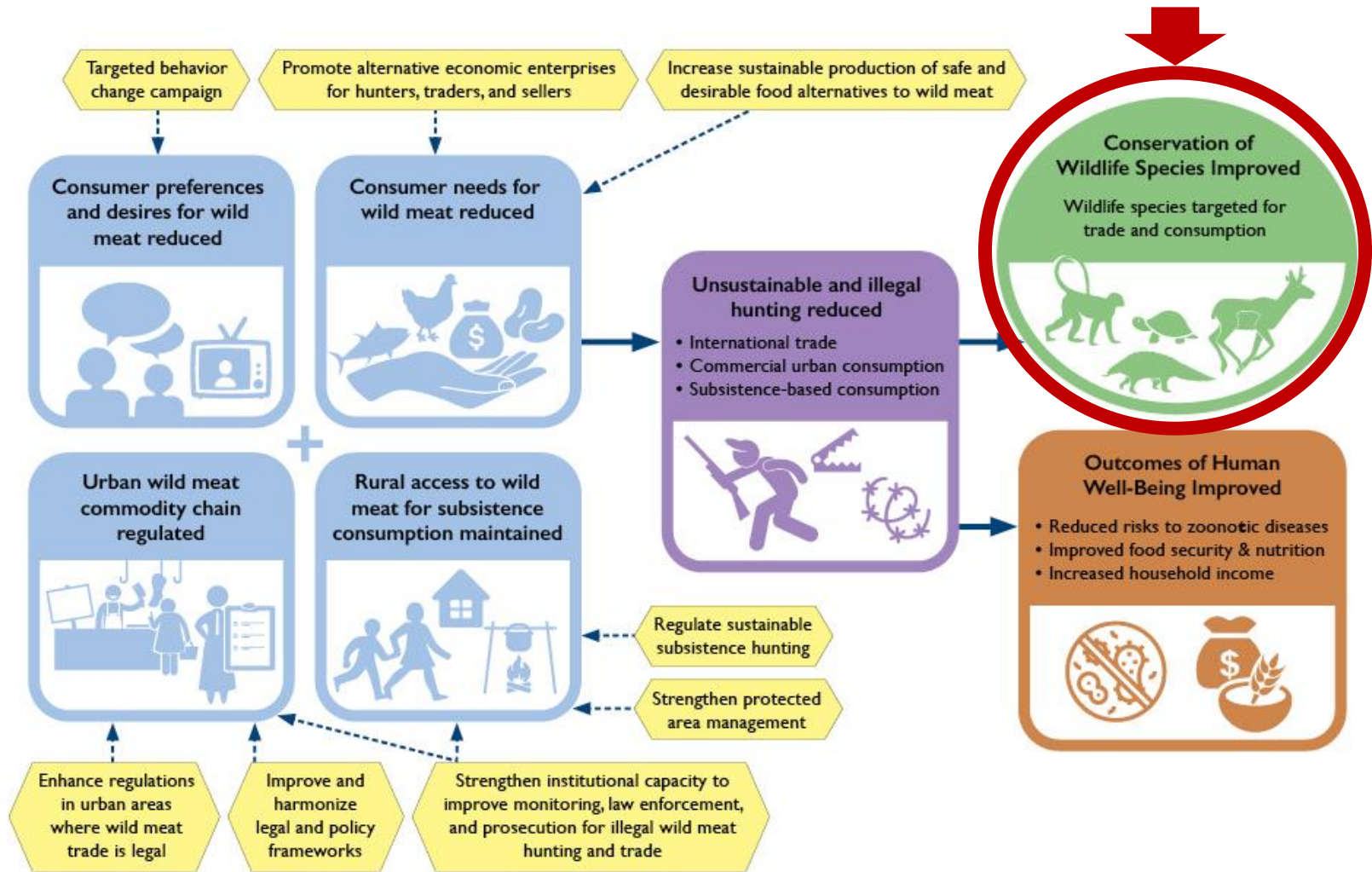


Wild Meat and One Health  
Date: 19 July 2023  
Time: 0800-0900 EDT / 1300-1400  
WAT

Stay tuned for more details on the Wild Meat Learning Exchange in  
Central Africa this fall!

# Learning Series Objectives

- Use effective **peer-to-peer learning approaches** to generate, harvest, and share lessons among USG and Implementing partners to strengthen cross-border collaboration and coordination.
- **Strengthen connections among participants** in order to **improve cross-sectoral collaboration and coordination** and increase use of available and forthcoming resources to support wild meat related programming.
- Emphasize the **wildlife and protected area perspective in the wild meat issue**, highlighting that the threat to **protected species** from the illegal and unsustainable **urban commercial bushmeat trade** that represents the greatest threat to Central Africa's wildlife.
- Discuss **issues that limit the possibility of having a sustainable bushmeat trade** including biological factors, public health risks, and lack of scientific information to determine offtake levels.



# Understanding how regulation and enforcement works

- Address the relationship between regulations and implementation
  - Discuss the influence of governance on regulations
  - Highlight capacity strengthening in relation to enforcement
  - Note data gaps for policy and operations
- Participants in today's session will hear from conservationists working on the ground from protected areas to urban markets working with those in the bushmeat trade to prosecutors in the courts.



A background image of vibrant green fern leaves, split vertically by a dark blue rectangular bar. The ferns are in sharp focus, showing their intricate, feathery structure.

02

**SECTION: Wildmeat  
Governance and Enforcement**

# Guest Speaker



**Mr. Francis TARLA**

**Bio:** Human Capacity & Curriculum development expert

## **Professional Experience:**

- Retired Lecturer at the University of Dschang in Cameroon  
University of Oxford
- Director of the Regional Wildlife College for French-speaking Africa, Garoua, Cameroon from 2003 – 2014
- Coordinator MENTOR-Progress on Pangolins (MENTOR-POP) & MENTOR-Bushmeat Programs
- Director of the Central African Bushmeat Action Group (CABAG)

# Guest Speaker



**Lude Kinzonzi**  
*Postgraduate Student,  
University of Oxford*



**Bio:** Conservationist

Currently:

Student, International Wildlife Conservation Practice, at WildCRU, University of Oxford

Previously:

Research and Campaign Assistant, Urban Bushmeat Project, WCS, Republic of Congo. Worked on bushmeat demand reduction by changing consumers' behaviour (2017-2023).

# Guest Speaker



***Ben Evans***

*Park Director, Nouabalé-  
Ndoki National Park,  
Wildlife Conservation  
Society*



**Bio:** Conservationist

## **Professional Experience:**

- University of Oxford
- WCS – Lac Tele Community Reserve  
Project Director
- WCS – Nouabalé-Ndoki National Park

# Topic of today's session

LQ3b: How effective are regulations at reducing illegal and unsustainable sale of wildlife?

**ESPECES INTEGRALEMENT PROTEGEES AU GABON**

Leur chasse, leur capture, leur détention, leur commercialisation et leur transport sont interdits

**Conformément à l'article 275 du code forestier, les auteurs des infractions vis-à-vis des espèces intégralement protégées sont punis d'un emprisonnement de trois à six mois et d'une amende de 100 000 à 10 000 000 de francs CFA ou de l'une de ces deux peines seulement.**

LE TRAFIC DE FAUNE FORTILLEMENT ATTENDU AU BORD PAYSANNE NATUREL DU GABON, LA PROTECTION DU CAPITAL DE TOUS NOS RIVERAINS.

Ministère de la Forêt et du Développement Rural  
10, Boulevard de l'Unité, Libreville, Gabon  
Téléphone : +241 97 99 99 99  
Site Web : www.mfrd.gouv.ga

Brainforest, GEF, WWF

# Summary of Relevant Inputs from Kickoff Webinar

When laws are in place, what are the barriers to enforcement?

What is needed for capacity strengthening from individuals to organizations?

What are the data gaps?

What is the relationship between bushmeat trade and combatting illegal wildlife trafficking?



# Q&A

Reminder this webinar is being recorded



# 03



The background of the slide is a close-up photograph of green, elongated leaves, likely from a plant like a banana or similar, with prominent veins. The leaves are arranged in a dense, overlapping pattern, filling the entire frame. The lighting is soft, highlighting the texture and color of the foliage.

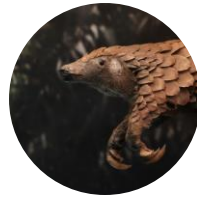
# WRAP-UP

04



# Wild Meat Learning Series

Join us for the Wild Meat Learning  
Series from April through July  
2023



Kickoff to the Wild Meat Learning Exchange  
Date: 19 April 2023  
Time: 0800-0900 EDT / 1300-1400 WAT



Wild Meat Enforcement and Governance  
Date: 23 May 2023  
Time: 0800-0900 EDT / 1300-1400  
WAT



Sustainable Wildlife Management Project  
Date: 21 June 2023  
Time: 0800-0900 EDT / 1300-1400  
WAT



Wild Meat and One Health  
Date: 19 July 2023  
Time: 0800-0900 EDT / 1300-1400  
WAT

Stay tuned for more details on the Wild Meat Learning Exchange in  
Central Africa this fall!

THANKS!

